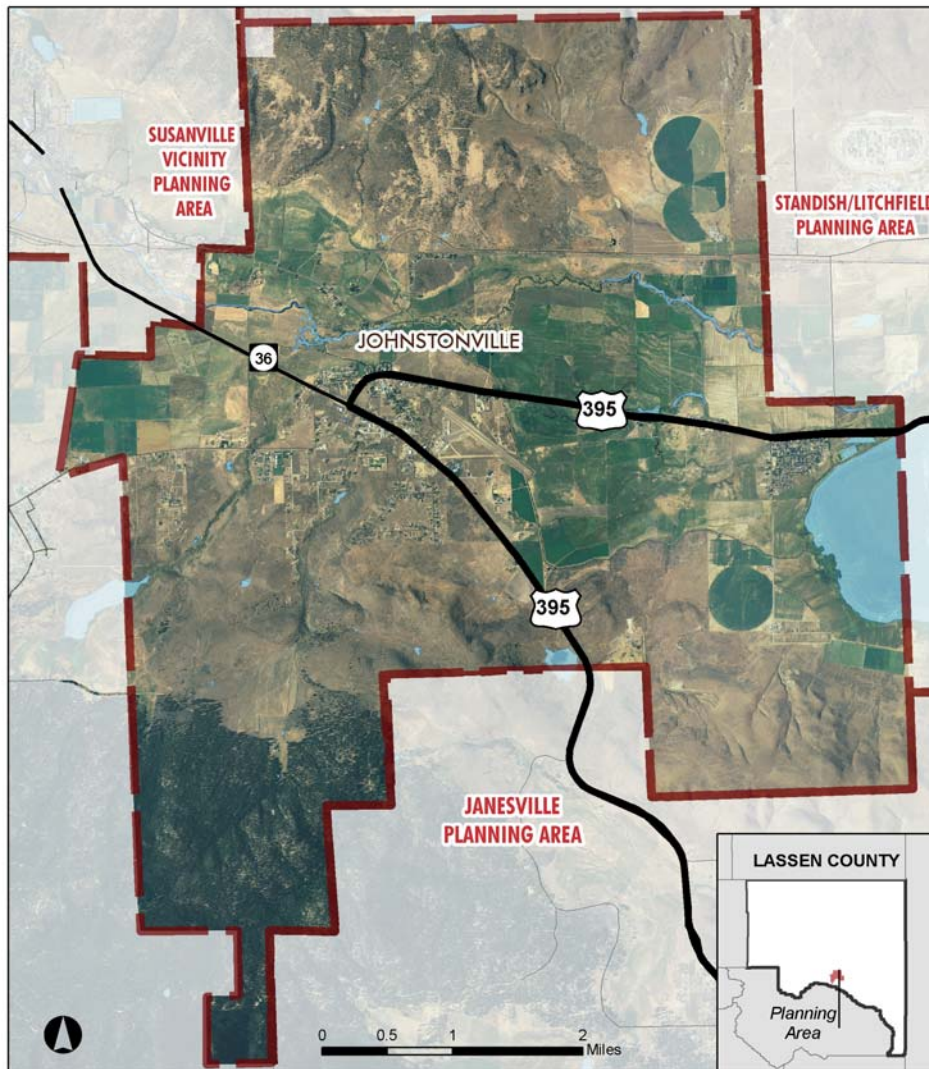


JOHNSTONVILLE PLANNING AREA

PLANNING AREA AT A GLANCE



Location and Communities

The Johnstonville Planning Area covers over 30 square miles of land in the Honey Lake Valley, east of Susanville. The Susan River crosses the northern portion of the planning area and Lake Leavitt is located on the area's eastern boundary provides a range of recreational opportunities for residents and visitors. The Johnstonville Planning Area is known to have a number of archeological resources, including a former Maidu Indian village and cemetery west of the Susanville Municipal Airport.



KEY FACTS AND FIGURES:

Population

- In 2000, the planning area was home to approximately 2,548 residents.

AREA TRENDS AND ISSUES:

Community Character

- Residents have expressed a desire for stronger code enforcement and increased property maintenance in and around the planning area's communities to preserve the scenic quality of the planning area.

Infrastructure and Services

- The majority of homes in the planning area rely on individual well and septic systems.
- Opportunity exists for water and sewer districts in the planning area to serve additional development.

Airport Compatibility

- The airport's location presents noise and other compatibility issues with surrounding land uses.
- Takeoff and approach patterns may limit long term growth opportunities near airport—particularly for residential.

Sources:

2000 US Census data



AREA TRENDS AND ISSUES:

Growth and Development

- Division of agricultural lands has occurred for rural residential development along Richmond Road and in other areas south and west of Johnstonville, fragmenting agricultural lands and creating conflicts between residents and agricultural operations.

JOHNSTONVILLE

State Highway 36 and US Highway 395 converge at Johnstonville, the planning area's principal community. The town functions as a "bedroom" community for workers in Susanville and at the nearby correctional facilities located in the Standish/Litchfield Planning Area.

Land Use Characteristics

- Agricultural lands occupy approximately 39 percent of the planning area (8,521 acres). Most of these agricultural lands are concentrated on the valley floor, between the airport and Leavitt Lake on either side of US Highway 395.
- Surrounding hillsides, some of which are forested, are reserved primarily for conservation and timber production. These uses occupy 4,757 acres and 704 acres respectively.
- The Bass Hill Wildlife Area separates the planning area from the Janesville Planning Area on the south.
- Low density and rural residential development is primarily concentrated in and around the community of Johnstonville; however, an additional concentration of homes exists adjacent to Leavitt Lake, just south of US Highway 395. These uses occupy 462 acres and 784 acres respectively.
- Commercial and industrial development is focused around the junction of State Highway 36 and US Highway 395 in Johnstonville. These uses occupy 221 acres and 235 acres, respectively.
- The Susanville Municipal Airport occupies 145 acres at the center of the planning area.

Area Services

A number of county and community services are located in the Johnstonville Planning Area, including:

- **Fire protection**—The Susan River Fire Protection District is the local fire protection agency in the Johnstonville Planning Area.
- **Schools**—The Johnstonville School District is a one-school district, serving 240 students in kindergarten through eighth grade.
- **Water and Wastewater**—The majority of properties rely on individual wells and septic systems for water service and sewage disposal; however, there are three small districts serving portions of the Johnstonville Planning Area. These districts include: Lake Leavitt Community Services District, Susan River Park Subdivision (water service only); and Lassen County system (Caltrans is the only customer).
- **Airport**—The Susanville Municipal Airport is located south east of Johnstonville. The airport has two runways and two helipads.
- **Solid Waste Disposal**—The Bass Hill Landfill (Lassen County Landfill) is located in the planning area.
- **Lassen County Cemetery**

RELATED PLANNING DOCUMENTS:

- Johnstonville Planning Area Master Environmental Assessment (1983)
- Johnstonville Area Plan Environmental Impact Report (1987)
- Lassen County Community Action Plans (1999)